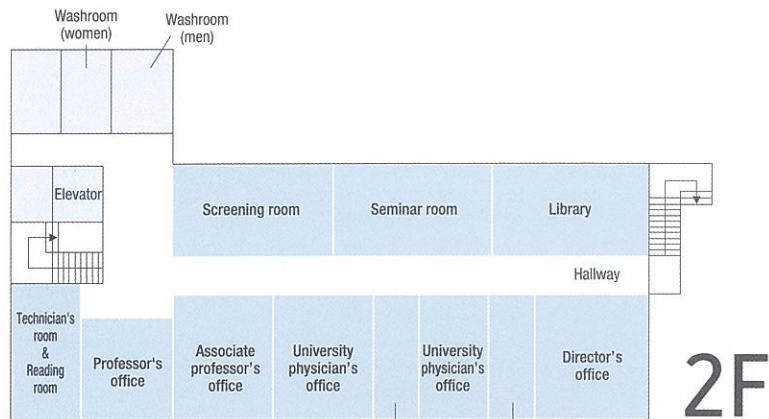
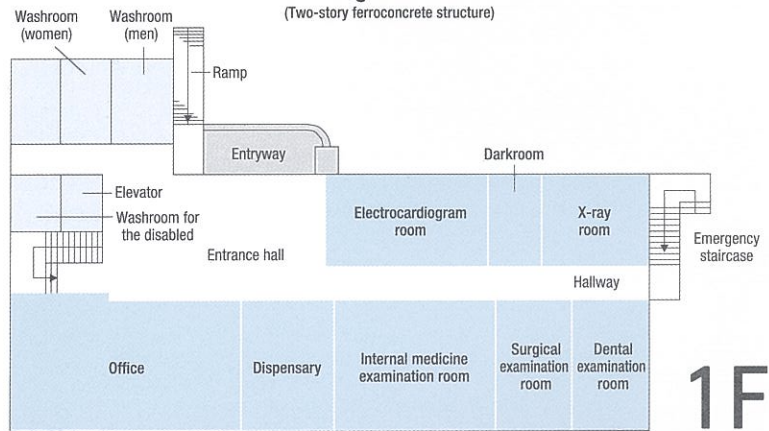


FLOOR MAP OF STUDENT HEALTH CARE CENTER



2F

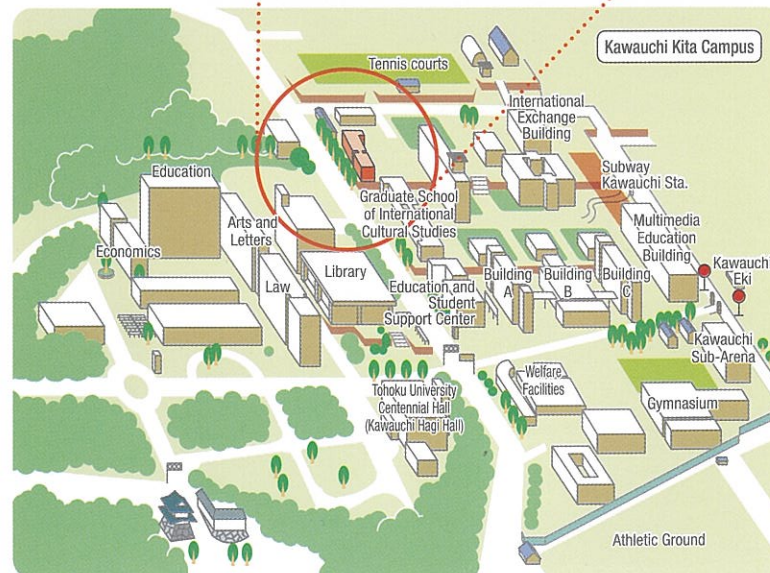
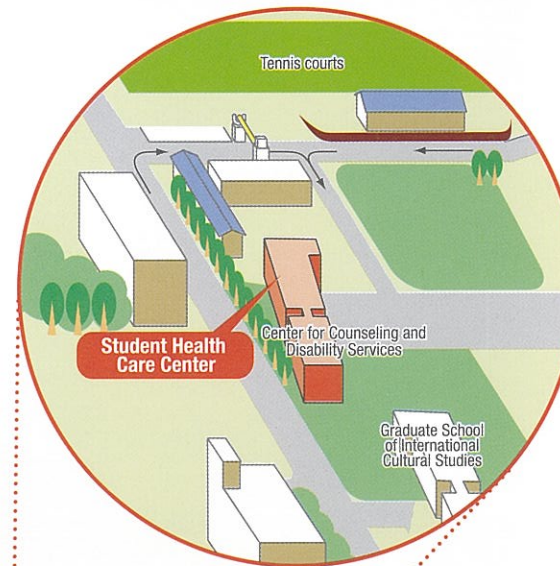
Building area 686 m²
(Two-story ferroconcrete structure)



1F



Scenery around student Health Care Center



Regular health checkup

**STUDENT HEALTH CARE CENTER
TOHOKU UNIVERSITY**



Location : Kawauchi41
Aoba-ku, Sendai 980-8576

Telephone : Internal Medicine and Surgery:
numbers 022-795-7829

Mental Health: 022-795-7829
(appointment required)

Dentistry: 022-795-7830
(appointment required)

Office: 022-795-7836 / 7835

F A X : 022-795-3804

U R L : <http://www.health.ihe.tohoku.ac.jp/>

E - m a i l : hoken@grp.tohoku.ac.jp

