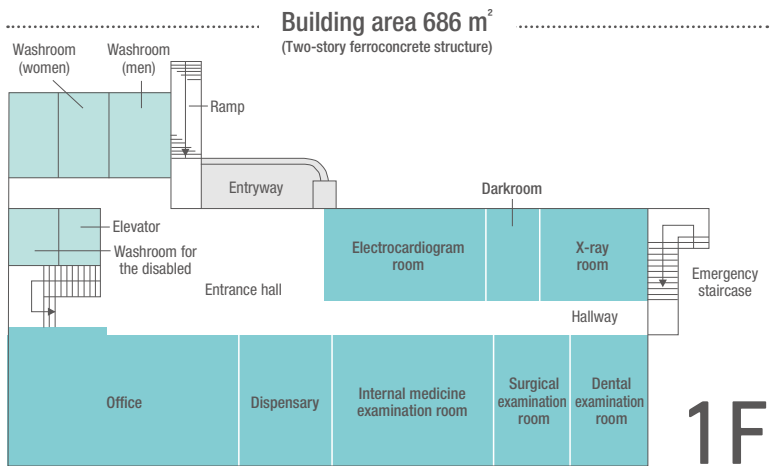
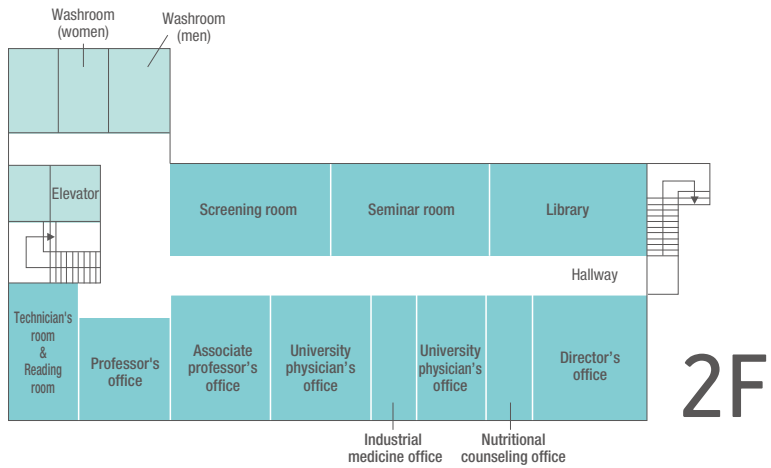


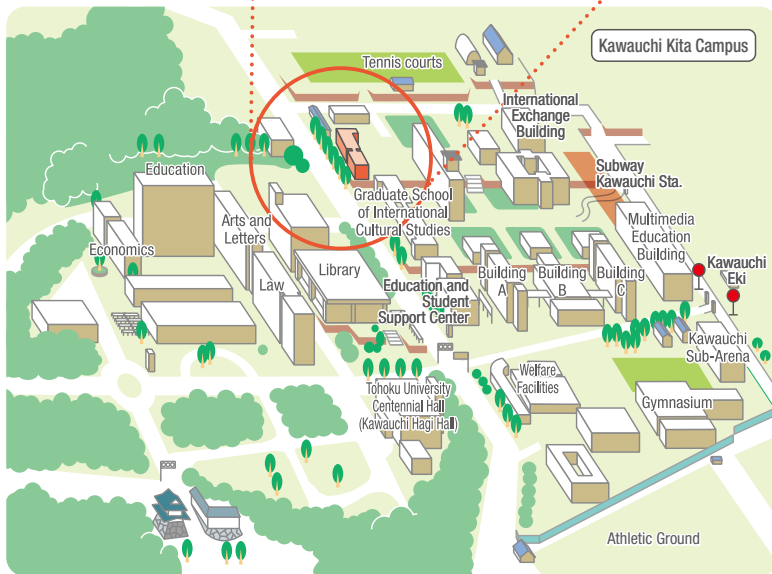
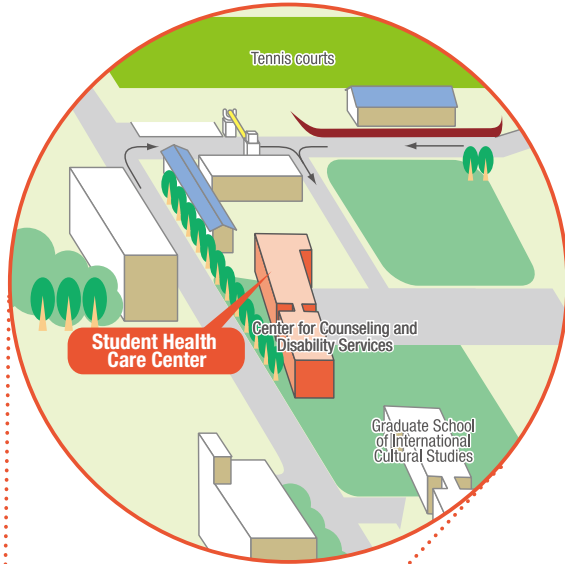
# FLOOR MAP OF STUDENT HEALTH CARE CENTER



Building area 686 m<sup>2</sup>  
(Two-story ferroconcrete structure)



Scenery around student Health Care Center



student Health Care Center

Location : Kawauchi41  
Aoba-ku, Sendai 980-8576

Telephone : Internal Medicine and Surgery:  
numbers 022-795-7829

Mental Health: 022-795-7829  
(appointment required)

Dentistry: 022-795-7830  
(appointment required)

Office: 022-795-7836 / 7835

F A X : 022-795-3804  
U R L : <http://www.health.ihe.tohoku.ac.jp/>  
E - m a i l : [hoken@grp.tohoku.ac.jp](mailto:hoken@grp.tohoku.ac.jp)





Student Health Care Center, Tohoku University

## THE OBJECTIVES OF STUDENT HEALTH CARE CENTER

### Overview

Student Health Care Center aims to maintain and improve the health of the students of this university. It is responsible for services such as proposing plans for improvement of health, offering regular and occasional medical checkups, providing medical advice and care, and imparting guidance on matters of environmental hygiene as well as other matters concerned with health.

The Center is located on the Kawauchi Kita Campus. In addition, there are Health Care Rooms on the Katahira, Medical/Dental School, Engineering, and Agricultural campuses, which provide general medical care and advice as well as emergency care. With its research and educational programs, it takes an active role in health management, including prevention and early detection of illness, and works toward continued progress in the health sciences.

## HEALTH ADVICE AND CARE

□ Office hours: Weekdays 9:00-11:30 AM, 1:00-4:15 PM

※ Office hours of mental health: Please refer to "consultations with specialists"

Branch office or Health Care room	Days available for consultation	Advice and care from university physicians	
		By specialty	Days for advice and care
<b>Student Health Care Center</b> (Kawauchi North Campus) (795-7829)	Monday-Friday (morning and afternoon)	Internal medicine	Monday-Friday
		Surgery	Monday-Friday(afternoons), Wednesday morning
		mental health	※Tuesday and Thursday and Friday ※ Monday(afternoons), Tuesday and Friday(mornings)
		Dentistry	※ Monday(afternoons), Tuesday and Friday(mornings)
<b>Katahira Health Care Room</b> (217-5022)	Friday (afternoons)	Internal medicine	Friday (afternoons)
<b>Medical and Dental School Health Care Room</b> (717-8192)	Thursday (afternoons)	Internal medicine	Thursday (afternoons)
<b>Agricultural Campus Health Care Room</b> (757-4036)	Monday and Wednesday (afternoons)	Internal medicine	Monday and Wednesday (afternoons)
<b>Engineering Campus Health Care Room</b> (795-3667)	Tuesday (afternoons)	Internal medicine	Tuesday (afternoons)

※ By appointment only

### Center Facilities

Student Health Care Center	Kawauchi North Campus
Katahira Health Care Room	Katahira Campus
Medical and Dental School Health Care Room	Seiryō Campus
Agricultural Campus Health Care Room	Aobayama New Campus
Engineering Campus Health Care Room	Aobayama Campus

### History

January	1929	The Student Clinic was opened.
September	1930	The medical and surgical treatments were started.
November	1937	The Student Clinic was renamed as the Student Health Clinic.
March	1962	The Student Health Clinic was renamed as the Student Health Counseling Office.
April	1964	The branch office was opened in the Kawauchi Area.
July	1969	Student Health Care Center was opened. (Law on the Establishment of National Schools, Article 29, 3) The Healthcare Room of the Faculty of Engineering and the Healthcare Room of the Faculty of Agriculture were opened.
April	1970	The Healthcare Room of the Faculty of Medicine/ Faculty of Dentistry was opened.
March	1994	Student Health Care Center was newly opened in Kawauchi-Kita Campus.
April	1994	The Katahira Healthcare Room was opened, and the Healthcare Room of the Faculty of Engineering was eliminated.
June	1994	The inauguration ceremony of Student Health Care Center and the ceremony marking the 25th anniversary of the opening of Student Health Care Center were held.
April	2004	The Healthcare Room of the Faculty of Engineering was opened.

## Consultations with Specialists (by appointment only)

2018.4

Specialty	Days	Timings
<b>Digestive disease</b>	Monday and Thursday	9:30 - 11:30
<b>Mental health</b>	Tuesday and Thursday and Friday	9:30 - 11:30, 13:00 - 16:00
<b>Lifestyle diseases</b>	Tuesday	9:30 - 11:30
<b>Circulatory diseases</b>	Thursday	9:30 - 11:30
<b>Smoking cessation clinic</b>	Tuesday	13:00 - 16:15



## ANNUAL SCHEDULE

### MAJOR EVENTS AT STUDENT HEALTH CARE CENTER

Month	Events
April	Regular medical checkups for new students (1st year undergraduates)
May	Regular medical checkups for other students
June	First special medical checkups for students who work with radioactive materials (Undergraduates, graduate students, and research students who work with radioactive materials)
June-July	Detailed re-examination of students who require further tests after the regular medical checkups (chest, heart, liver, diabetes, blood pressure, abnormal weight)
July	First special medical checkups for students who work with organic solvents and other specified chemical substances (Undergraduates, graduate students, and research students who work with organic solvents and other specified chemicals)
September	First re-screening of students who work with organic solvents and other specified chemicals
October	Medical checkups for students who work with video display terminals (Undergraduates, graduate students, and research students who work with video display terminals)
November	Second special medical checkups for students who work with organic solvents and other specified chemical substances (Undergraduates, graduate students, and research students who work with organic solvents and other specified chemicals)
	Fall chest X-rays
December	Second special medical checkups for students who work with radioactive materials (Undergraduates, graduate students, and research students who work with radioactive materials)
January	Second re-screening of students who work with organic solvents and other specified chemicals
	Health Science Conference

Health services	<ul style="list-style-type: none"> <li>● Checkups and health advice (all students and faculty)                             <ul style="list-style-type: none"> <li>Internal medicine</li> <li>Surgery</li> <li>Dentistry</li> <li>Mental health</li> </ul> </li> <li>● Issuance of health checkup certificates</li> <li>● Nutritional counseling and advice</li> </ul>
Educational program	Graduate School of Information Science (Health Information) Lectures All-University Educational Courses (The Body and Health) Health Science Seminars (4 times a year)
Publications	"Health Guide" published annually (all students) "The Center Annual Report" published annually (all offices within the university and all health administration facilities)